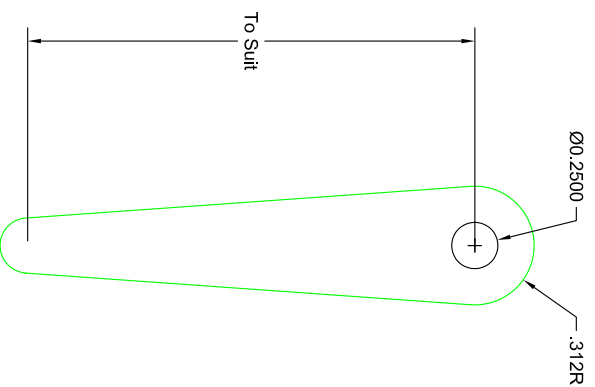
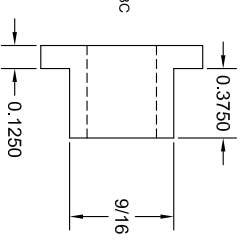
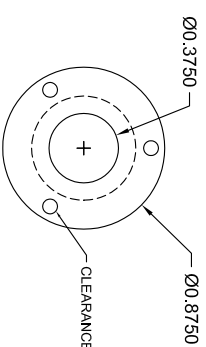


ARM BUSHING
MAKE 1 FROM BRASS
SILVER SOLDER
TO ARM
REAM 3/16 AFTER
SOLDERING

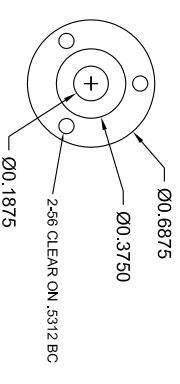
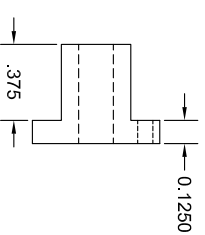
Bush to be light slip fit
in Drive Bushing



Arm - make from 1/8 CRS
Shape / length to suit



DRIVE BUSHING
MAKE 1 FROM BRASS / BRONZE



IDLE END BUSHING
MAKE 1 FROM BRASS / BRONZE