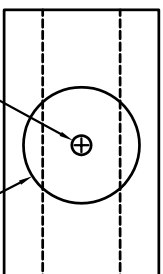
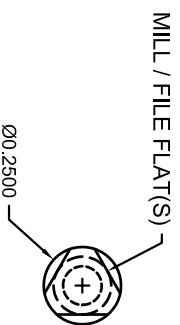
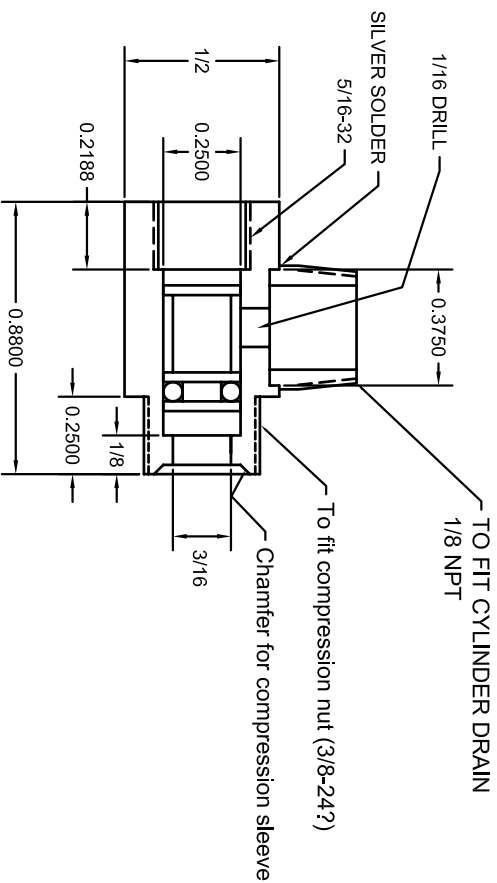
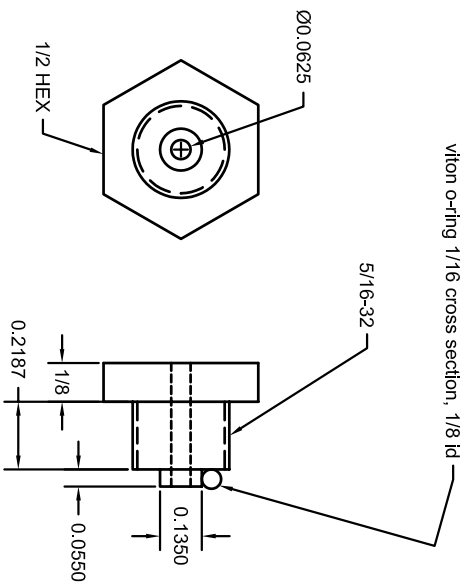
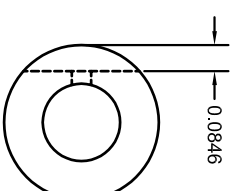


1/8 PIPE NIPPLE
TURN DOWN END
TO FIT BODY



Ø0.0625
COUNTERBORE 3/8 X .08 DP
FOR PIPE NIPPLE TO BE
SILVER SOLDERED



VITON O-RING 1/16 CROSS SECTION 1/4 OD

Cylinder Cock
Make 4
From Brass